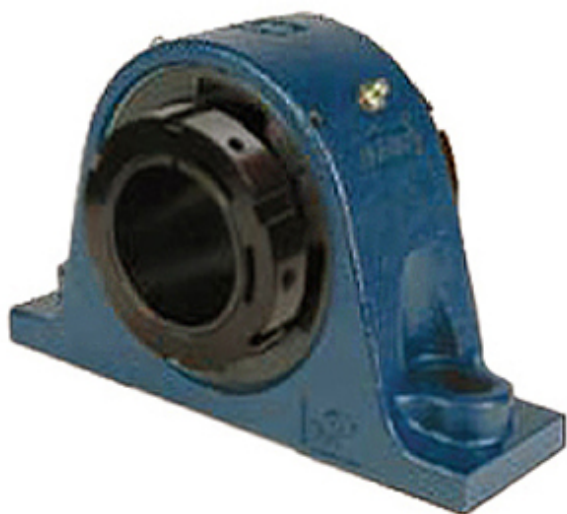




# PRECISION AXLE CORP.



3.5 Inch | 88.9 Millimeter x 3.69 Inch | 93.726 Millimeter x 3.75 Inch | 95.25 Millimeter QM INDUSTRIES QVPL19V308SEM Pillow Block Bearings

Bearing No. QVPL19V308SEM

QVPL19V308SEM Bearing 2D drawings and 3D CAD models

Category	Pillow Block Bearings
Inventory	0.0
Manufacturer Name	TIMKEN
Minimum Buy Quantity	N/A
Weight	17.706
EAN	0883450172943
Product Group	M06288
Number of Mounting Holes	2
Mounting Method	V Lock
Housing Style	2 Bolt Pillow Block
Rolling Element	Spherical Roller Bearing
Housing Material	Cast Steel
Expansion / Non-expansion	Expansion
Mounting Bolts	7/8 Inch
Relubricatable	Yes
Insert Part Number	22219
Seals	Triple Lip Nitrile Rubber
Housing Configuration	1 Piece Solid
Inch - Metric	Inch
Other Features	Double Row   Single Nut
Long Description	2 Bolt Pillow Block; 3-1/2" Bore; 3-3/4" Base to Center Height; V Lock Mount; Spherical Roller Bearing; 9-1/4" Minimum Bolt



## PRECISION AXLE CORP.

	Spacing; 10-3/4" Bolt Spacing Maximum; Relubricatable; C
Category	Pillow Block
UNSPSC	31171511
Harmonized Tariff Code	8483.20.40.80
Noun	Bearing
Keyword String	Pillow Block
Manufacturer URL	<a href="http://www.qmbearings.com">http://www.qmbearings.com</a>
Manufacturer Item Number	QVPL19V308SEM
Weight / LBS	39
B	3.75 Inch   95.25 Millimeter
Nominal Bolt Center to Center	10 Inch   254 Millimeter
Bolt Spacing Maximum	10.75 Inch   273.05 Millimeter
d	3.5 Inch   88.9 Millimeter
D	3.69 Inch   93.726 Millimeter
Actual Bolt Center to Center	0 Inch   0 Millimeter
Bolt Spacing Minimum	9.25 Inch   234.95 Millimeter