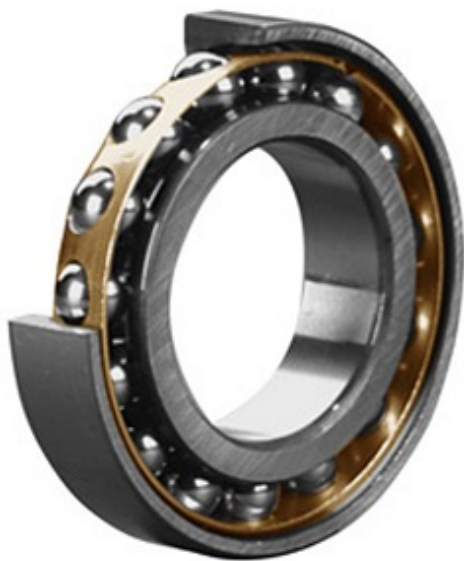




PRECISION AXLE CORP.



7024 MG Bearing 2D drawings and 3D CAD models

4.724 Inch | 120 Millimeter x 7.087 Inch | 180
Millimeter x 1.102 Inch | 28 Millimeter
**CONSOLIDATED BEARING 7024 MG Angular
Contact Ball Bearings**

Bearing No. 7024 MG

Category	Angular Contact Ball Bearings
Inventory	0.0
Manufacturer Name	CONSOLIDATED BEARING
Minimum Buy Quantity	N/A
Weight	2.499
EAN	0644075150491
Product Group	B00308
Enclosure	Open
Flush Ground	Yes
Rolling Element	Ball Bearing
Number of Rows of Balls	Single Row
Precision Class	ABEC 1 ISO P0
Maximum Capacity / Filling Slot	No
Snap Ring	No
Cage Material	Bronze
Contact Angle	30 Degree
Internal Clearance	C0-Medium
Number of Bearings	1 (Single)
Mounting Arrangement	Universal
Inch - Metric	Metric
Long Description	120MM Bore; 180MM Outside Diameter; 28MM



PRECISION AXLE CORP.

	Width; Open; Yes Flush Ground; Ball Bearing; Single Row of Balls; ABEC 1 ISO P0; No Filling Slot; No Snap Ring
Category	Angular Contact Ball Bearing
UNSPSC	31171531
Harmonized Tariff Code	8482.10.50.28
Noun	Bearing
Keyword String	Angular Contact
Manufacturer URL	http://www.consbrgs.com
Weight / LBS	5.51
d	4.724 Inch 120 Millimeter
D	7.087 Inch 180 Millimeter
B	1.102 Inch 28 Millimeter